



Presenting the new
**Mahindra Supro
Profittruck
Maxi**

No.1 in Power. No. 1 in Profit.

SUPRO
PROFIT TRUCK


The new Mahindra Supro Profitruck Maxi


When the features are as good, getting more profit is a give in. **Mahindra Supro Profitruck Maxi** offers an excellent mileage of 21.94 km/l*, which means you save more. The payload of 1050 kg which will help you earn more per trip. Bigger tyres - 155/80 R14-8PR (35.56 cm) – to make driving easy on any road. Its class leading 8 front leaf spring rigid suspension helps you to lift even the heaviest of loads. Its powerful DI engine of 35.4 kW and its all new transmission make the drive absolutely smooth, comfortable and fatigue-free – so you can make more trip and earn more. What's more, it offers the best warranty in its category – 3 years/80 000.00# km which means that you won't have to worry about maintenance costs as well. So, buy a Supro Profitruck Maxi and take your profits to new heights.

The truck with a better performance - Supro Profitruck

 **21.94 km/l*** Mileage


 **35.4 kW** Power


 **Strong chassis**

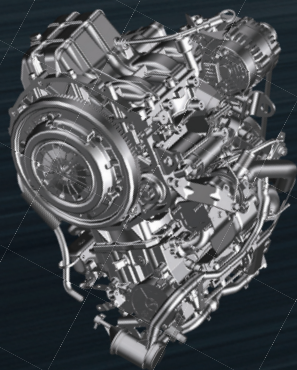
 **5 speed** gearbox

 **100 Nm** Torque

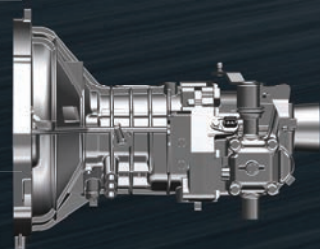


 **155/80 R14-8PR (35.56 cm)** Tyre

 **196 mm** ground clearance



DI engine



New transmission that gives car-like gearshift





**8 leaf spring front;
6 leaf spring rear**

Stylish Minitruck with more comfort and unmatched performance

- More cabin space to ensure every journey is comfortable
- Attractive floor carpet
- Bottle holder in console
- Glove box for protection of valuables

 Powerful AC

 Power steering

 Mobile charging point



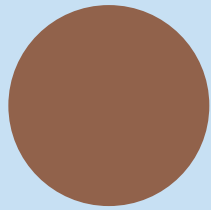
The truck with better safety – Supro Profittruck

- 220 mm front nose design to keep you safer
- ELR seatbelts for better protection
- Dual LSPV brakes that provide excellent control

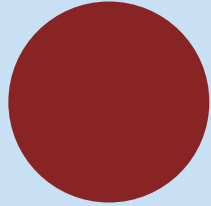
Trust of Mahindra

- Warranty of 3 years or 80 000.00# km means less maintenance and more savings
- 2 600.00 Mahindra Mitra Technicians trained by Mahindra
- ₹ 10 lakh Life insurance and other attractive benefits only for Uday members





LAKESIDE BROWN



CRIMSON RED



DIAMOND WHITE

AVAILABLE IN CBC AND HI-DECK VARIANTS



Specification	Description	Supro Profittruck Maxi
Engine	Type	Direct Injection Diesel Engine with TC
	No of cylinders	2
	Displacement Capacity	909 cm ³
	Maximum Engine Output (Power)	35.4 kW @ 3750 r/min
	Maximum Torque	100 Nm @ 1600-3000 r/min
Transmission	No of Gears	5-Forward and 1- Reverse
Steering	Type	LX Manual, VX and ZX Power
Suspension	Front	8 Leaf spring
	Rear	6 Leaf spring
Brake	Type	Vacuum Assisted Hydraulic with Auto Adjuster
	Front	Disc
	Rear	Drum
Dimensions	Over all vehicle Dimension L X W X H (mm)	4148 x 1540 x 1915
	Cargo Box Dimension L X W X H (mm)	2500 x 1540 x 330
	Wheel Base (mm)	2050
	Min Ground Clearance (mm)	196
	Turning Radius (m)	5.25
Weights	GVW (kg)	LX 2185
	Payload (kg)	1050
Wheels & Tyres	Wheel Rim Size	4.5 J x 14 (35.56 cm)
	Tyre Size Designation	155/80 R14-8PR (35.56 cm)
	Max Speed (km/h)	80
	Seating Capacity	D + 1
	AC	Available in ZX
	Fuel Tank Capacity (L)	33
	Mileage	21.94 km/l*
	Warranty	3 year/80 000.00 [#] km

Terms and conditions applied. Accessories shown are not part of standard equipment. As per *VRDE certification, based on standard driving conditions. [#]Warranty of 3 years or 80 000.00 km whichever is earlier.

SUPRO
PROFIT TRUCK

Mahindra
with you
hamesha
1800-209-6006
customercare@mahindra.com



Mahindra & Mahindra Ltd., Automotive Sector, Mahindra Towers, 3rd Floor, Akurli Road, Kandivali (E), Mumbai 400 101.

All features and colors mentioned are not available on all models. Accessories shown are not part of the standard equipment. Performance figure may differ in conditions other than test conditions. Vehicle body color may differ from the printed photographs. In view of our policy of continuously improving our products, we reserve the rights to alter specifications or designs without prior notice and without liability. Please check model details with your nearest dealer.